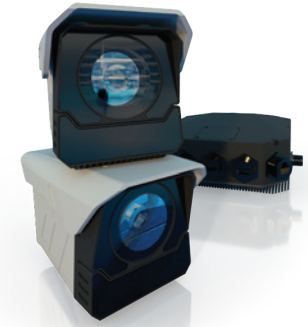


# 2-Camera Day & Night System with AI Edge Hub



## TWO MOVES AHEAD

The NVeyeTech AI Edge Hub provides an advanced AI system, empowering you with live analytics to make quick decisions, so you can keep moving. The AI Edge Hub serves as both the intermediary between the navigational cameras and the MFD allowing the MFD to read the advanced AI signal which is fused to the video feed.

This unit is also our first network-capable system, using two NVeyeTech® cameras for live front and rear views from your vessel that keep you clear and safe. Connect to your MFD to identify and track boats, breakwalls, and other water hazards that are typically hidden in the dark of the night.

## FEATURES

- Front Primary Navigation Camera with 27° Horizontal FOV
- Rear Camera with 42° FOV
- Advanced AI to Detect, Identify, and Track Objects & Hazards
- Quad-Core CPU with Integrated GPU
- Wireless IP Networking over WiFi
- Customizable Device Control via USB 3
- 4G Remote Connectivity and Constant On-Loop Recording\*
- Integrates with Modern MFDs or connects via iOS/Android App

\*SIM card and data plan needed for remote connectivity, automatic system updates, and video upload to the cloud.

## AI EDGE HUB UNIT: 2-Camera System

Processor	Quad Core CPU with Integrated GPU
Ram	4 GB
Storage	Solid State, 64 GB
IP Networking (Wireless)	WiFi 802.11 b/g/n @ 50 Mbps SSID/WPA/WPA2 Security
IP Networking (Wired)	Ethernet 10/100
Peripherals	RGB status LED Reset Switch HDMI Video Output USB 3 for customizable device control

## SYSTEM

Remote Connectivity	GPS/GPRS 4G
Video Input (Ethernet)	2X Pos, IP67, M20 RJ45 10/100 Mbps
Video Output (Wireless)	Wi-Fi
Video Output (Ethernet)	1X 8 Pos, IP67, M20 RJ45 10/100 Mbps
Video Output (HDMI)	12 Pos, IP67, M24 HDMI
Power Connection	4 Pos, IP67, M8
Power In	12 / 24 VDC @ 3A Average

## ENVIRONMENTAL

Ingress Protection	IP67 Water / Dust
EMC	IEC60945 (V:15G / H:9G) IK08
Hub Operating Temperature	-10°C to +35°C
Material	ABS / UV resistant coat Heat reflective pigment Polycarbonate AL6K anodized heat sink SS fasteners



### IR Night Vision

Pinpoint markers and threats in the dark



### Artificial Intelligence

Detect, identify, classify, track and range hazards on the move



### Foolproof Recording

Capture and store on-device



### Weather-Safe Cameras

Use in rain, fog, sun, dust, hail, and snow

## CAMERAS

Front Camera	Primary Navigation Camera - 27° FOV
Rear Camera	42° FOV
Operating Temperature	-10°C to +50°C

## CONTACT US

seewhatliesahead.com | tom.frane@nveyetech.com | +1 (503) 701-0213  
4422 Airport Expressway, Suite 220 | Fort Wayne, IN 46809 | United States



Scan for full specs and to learn more about how you can **harness the power of AI integrated with advanced day & night vision technology to enhance your vessels** with the next generation of smarter navigation and intelligent vision systems.